

RYCO In-Line Swivel

RYCO is proud to release the NEW standard in Swivels.

RYCO's In-Line Swivel works at higher pressures, has the lowest torque and lasts longer.

Featuring self lubrication, easy rotation and a solid construction, RYCO's In-Line Swivel eliminates hose twist and has an extended life.

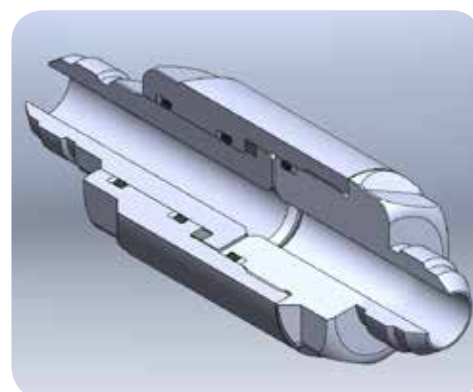
Pulsed at 420 bar / 6,100 psi with alternating 90° rotation for 500,000 cycles and still going.

RYCO's In-Line Swivel is built to last.



IN-LINE SWIVEL SPECIFICATIONS

SERIES	END 1	END 2
RS27P	BSPP MALE	BSPP MALE
RS72P	BSPP MALE	BSPP FIXED FEMALE
RS44	BSPP MALE BULKHEAD	BSPP MALE
RS17	JIC MALE	JIC MALE
RS16P	JIC MALE	BSPP FIXED FEMALE
RS16N	JIC MALE	NPT FIXED FEMALE
RS90	JIC MALE	UNO MALE (O RING BOSS)
RS98	JIC MALE	JIC/UNO FIXED FEMALE (O RING BOSS)
RS10	JIC MALE BULKHEAD	JIC MALE
RS72N	NPT MALE	NPT FIXED FEMALE
RS116	ORFS MALE	ORFS MALE
RS173F	ORFS MALE	ORFS FIXED FEMALE
RS141	ORFS MALE BULKHEAD	ORFS MALE



SIZE			WORKING PRESSURE	
INCH	DASH	EN	BAR	PSI
1/2"	-08	12	420	6,100
3/4"	-12	19	420	6,100
1"	-16	25	420	6,100
1.1/4"	-20	31	380	5,500

For additional information please contact RYCO Product Management or your local RYCO representative.