

## RY420 EVO

ASSEMBLING FOR FIELD REPAIR  
BENCHTOP CRIMP MACHINE

## KEY FEATURES

High crimping force of 420 tonnes

Robust design for transport and operation in harsh environments

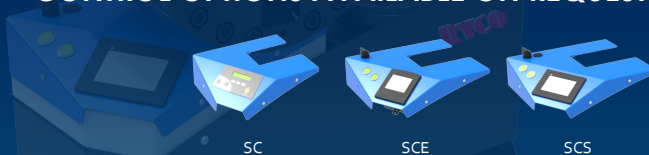
Protected cylinders for trouble-free operation in high dust environments

Large opening suitable for large bore hoses

Easy maintenance due to foam pads and dust collector

Model shown equipped with SC control panel

## CONTROL OPTIONS AVAILABLE ON REQUEST



## TECHNICAL SPECIFICATIONS

## CAPACITY\*

6ws: 3" max.

Industrial: 4" max.

## CRIMP RANGE

4 - 130 mm (0.157 - 5.118")

## CRIMP FORCE

420 t

## OPENING WITH DIES

+48 mm (+1.9 inch)

## COMPLETE OPENING

178 mm (7.0 inch)

## MASTER DIE LENGTH

120 mm (4.724 inch)

## STANDARD DIES

14, 16, 19, 22, 26, 30, 34,  
39, 45, 51, 57

## NOISE LEVEL

<70 dB A

## MOTOR

5.5 kW

## VOLTAGES

220/240 V, 3Ph, 50 Hz

380/415 V, 3Ph, 50 Hz

208/240 V, 3Ph, 60 Hz

380/415 V, 3Ph, 60 Hz

## DIMENSIONS

765 x 500 x 800 mm

(30 x 20 x 32")

## PACKAGING

745 x 1150 x 945 mm

(29 x 45 x 37")

## NET WEIGHT

395 kg (871 lb)

\*Indicative capacities depending on hose and fitting type

## OPTIONAL



Maintenance Kit



Electrical Footswitch



Die Storage Panel



Die Storage Table

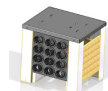


Table with racks EVO



Quick Change Gun



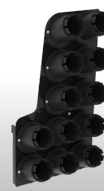
Aluminium Quick Change Gun



Die Sets for Brake &amp; Air Conditioning Hoses



Marking Dies



Die Storage Panel EVO