



JSEAL™

THE NEW STANDARD
IN JIC FITTINGS



JSEAL™

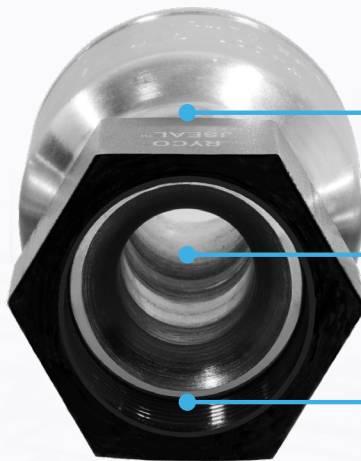
THE NEW STANDARD IN JIC FITTINGS



THE BLACK NUT

DOUBLE THE TORQUE

DOUBLE WORKING PRESSURE



SIDE LOAD TOLERANT

CONVEX FEMALE DESIGN

REPOSITIONED STRIKE ZONE

LEAK FREE

NO SWEATING

NO WEEPING

NO STRETCHING

NO CRACKING

LEAK FREE.
WE GUARANTEE IT*.

* Use JSEAL™ correctly to RYCO specifications.

RYCO QUALITY



JSEAL™

UP TO DOUBLE THE WORKING PRESSURE

RYCO JSEAL™ provides up to double the working pressure of standard JIC connections.

JSEAL™ performance is equal to or better than ORFS (O-Ring Face Seal).

RYCO JSEAL™ ASSEMBLY SPECIFICATIONS

RYCO JSEAL™ SIZE			RYCO JSEAL™ SPECIFICATIONS	
THREAD SIZE	TUBE SIZE	DASH SIZE	MAXIMUM WORKING PRESSURE	RECOMMENDED TORQUE SETTINGS
inch	inch		bar	Nm
7/16	1/4	-07	700	23
9/16	3/8	-09	700	39
3/4	1/2	-12	630	77
7/8	5/8	-14	630	142
1.1/16	3/4	-17	560	198
1.3/16	7/8	-19	490	235
1.5/16	1	-21	420	263
1.5/8	1.1/4	-26	420	309
1.7/8	1.1/2	-30	350	386
2.1/2	2	-40	280	597

Note: JSEAL 2" (-40) has a 3.5:1 safety factor.

EASY TO INSTALL
SELF ALIGNING



CONNECTING PARTNERSHIPS



JSEAL™

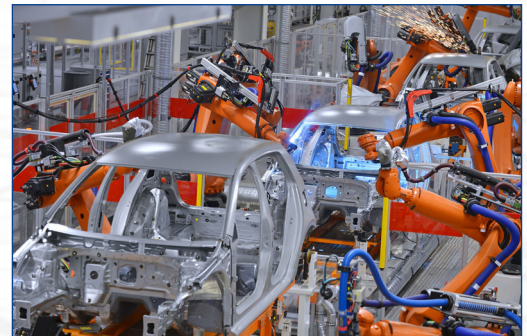
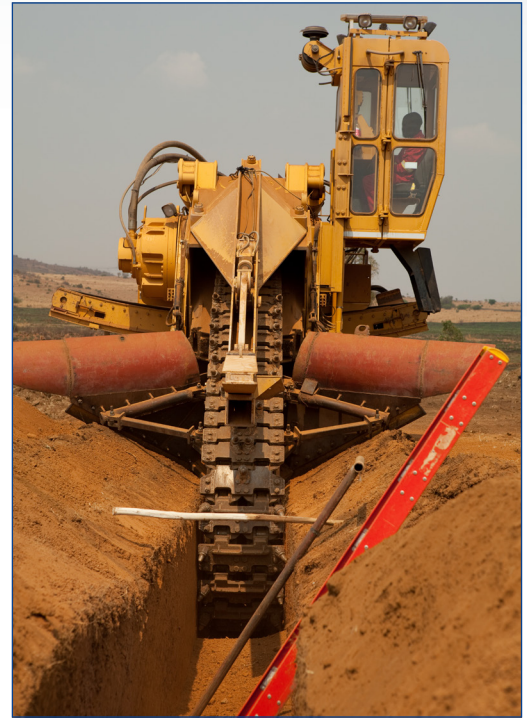
Leak free.
No cracking.
Stronger.
No equipment modifications required.
Excellent vibration resistance.
Resistant to excessive torque and stretching.
Fully interchangeable with JIC.
Easier installation.
Easier connections.

EXPECT SAVINGS ON

Labour
Warranty Claims
Part Replacement

INCREASED EFFICIENCY

RYCO's **JSEAL™** means increased efficiency, improved productivity, unparalleled reliability and ongoing cost effectiveness.



AUSTRALIA +61 1300 111 247
CHINA (DALIAN) +86 411 8886 0006

NEW ZEALAND +64 800 842 872
CHINA (SHANGHAI) +86 512 3306 6181
SOUTH AFRICA +27 10 4100 500

USA & CANADA +1 866 821 7926
MALAYSIA +60 4 415 2500
EUROPE +43 676 723 95 37



www.RYCO.com.au